

FRESHMAN'S GUIDE

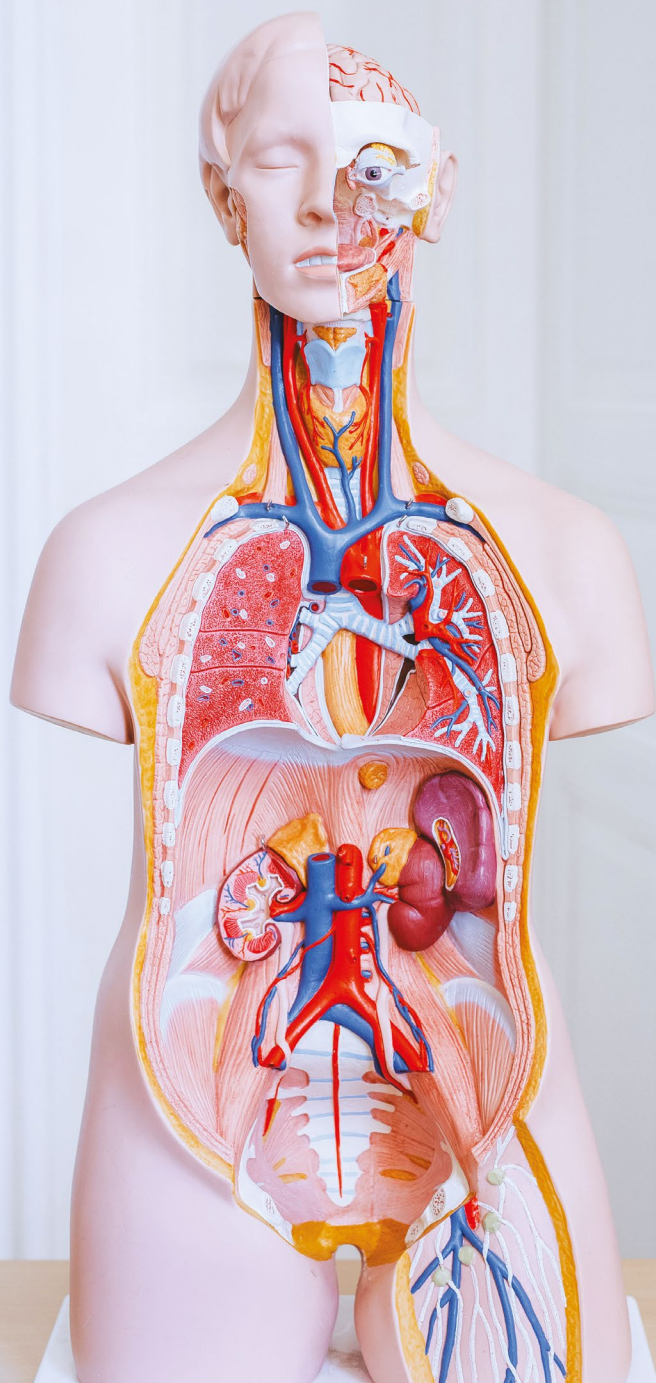
2023/2024



FIRST FACULTY
OF MEDICINE
Charles University



Charles University



CONTENT

2	Introduction
3	Structure of the Faculty
5	Academic Senate
6	International Office
8	Studies and Regulations
10	<i>Academic Calendar</i>
11	<i>Student Information System</i>
12	<i>Compulsory and Elective Subjects</i>
14	<i>Credits and Exams</i>
16	<i>Credit System and Individual Study Plan</i>
18	<i>Evaluation of Teaching</i>
19	<i>Counselling and Mediator</i>
20	Student Card
21	Matriculation Ceremony
22	Medical Check-Up
24	Dormitories and Canteens
25	Textbooks, Library, Resources and the Institute of Scientific Information
26	Sports
27	Internet Connection and Social Media
28	Student Life
29	<i>Student Associations</i>
30	Calendar of faculty's events where students are welcome
32	A few practical tips at the end
33	Maps

INTRODUCTION

Dear Students,

Welcome to the First Faculty of Medicine, Charles University (1. LF UK) – the oldest medical faculty in Central Europe. We are delighted that you have chosen Charles University as your new alma mater. As transitioning from high school to university can be challenging, we created this guide to help you through your first steps at our Faculty.

This guide covers many answers to your questions about studies and life at the faculty. It will help you during the first few weeks of your studies, but please do not hesitate to ask our team if you do not find the answers that you seek. We are here to help you achieve the maximum of your potential and guide you if you face any difficulties or obstacles.

Student life at the Faculty, in the historic metropolis of Prague, can offer you a multitude of diverse possibilities. Your experiences here, during these formative years, will hopefully set you on a path of success in your career and life. We hope that the years spent with us will be successful and that you will fondly remember them for the rest of your life. We wish you patience, endurance, passion, success, and happiness in your future years.

First Faculty of Medicine, Charles University

STRUCTURE OF THE FACULTY

The First Faculty of Medicine is one of the seventeen faculties of Charles University. Charles University is led by the Rector, prof. MUDr. Milena Králíčková, Ph.D. The University was founded in 1348 by the Emperor Charles IV and it is the oldest university east of the Rhine River and north of the Alps and our faculty is one of the original faculties.

The faculty is led by the Dean, prof. MUDr. Martin Vokurka, CSc., with the assistance of the Vice-Dean's, the Dean's Board and the Academic Senate. You may find the university's and faculty's management on the respective websites.



Dean

prof. MUDr. Martin Vokurka, CSc.

"Let me welcome you on board! I wish you the best in studying at the First Faculty of Medicine of Charles University in Prague."



Vice Dean for International Studies

MUDr. Eitan Brizman, B.D.S.

"Student life at 1. LF UK, in this historic metropolis of Prague, can offer you a multitude of diverse possibilities. Your experiences here during these formative years will hopefully set you on a path of success, for not only your future career, but life as a whole. We hope that these shall be halcyon days for you that you will fondly remember for the rest of your life."



Vice Dean for Dentistry
prof. MUDr. René Foltán, Ph.D.

“Dentistry studies at our faculty combine medical knowledge and practical skills – this is a good way to great contemporary stomatology.”



Vice Dean of Clinical Education and General Medicine
doc. MUDr. Andrea Burgetová, Ph.D.

“At our faculty, you will meet professionals, top doctors and excellent scientists who will share their knowledge and experience with you.”

Other Vice Deans:

Vice Dean for International Relations - prof. MUDr. Aleš Linhart, DrSc.

Vice Dean for Scientific Work – prof. MUDr. Pavel Klener, Ph.D.

Vice Dean for Faculty Development – prof. MUDr. Otomar Kittnar, DrSc.

Vice Dean for Grant Projects – prof. MUDr. Petra Lišková, Ph.D.

Vice Dean Postgraduate Doctoral Studies – doc. MUDr. Lukáš Zlatohlávek, Ph.D.

Vice Dean for Non-Medical Study Programmes – prof. PhDr. Michal Miovský, Ph.D.

ACADEMIC SENATE

The Academic Senate is an elected faculty body composed of professors and students, which approves all faculty rules and amendments in cooperation with the Dean.

The Senate has 30 members: one half is elected by students and the other half is elected by academic employees. The list of all the members of the Academic Senate is available [online](#).

The Academic Senate meets once per month. The meetings are open for all faculty members and students, so you are welcome to come and observe.

Elections for the Senate are carried out every three years. They are preceded by several weeks of lively campaigning, so it's hard to miss them.

As a student, you also have a chance to become one of the selected members. Knowledge of the Czech language is strongly recommended, yet international students are also represented.

If you have ideas or concerns that you would like to bring to the attention of the Academic Senate, you can send a message by using the form on the [website](#).

INTERNATIONAL OFFICE

The International Office is located on the ground floor of the Dean's Building at Kateřinská 32, Prague 2.

The office is here to make your studies successful and help you understand the university system and manage everything concerning your studies such as - enrollment and cancellation of subjects, confirmation of studies, summer clerkships, support for students with special needs or medical check-up. You may submit your requests concerning your studies, ask about services and life in Prague or get information about study opportunities abroad.

You may always visit us during the office hours. Check the current office hours of the International Office [here](#) or contact us to schedule an individual appointment.

CONTACT INFORMATION



The Head of the International Office

ZUZANA HANIKOVÁ

E-mail: zuzana.hanikova@lf1.cuni.cz

Phone: +420 224 964 502



Applicants and Admissions Process, 1st year

JANA ŠILHÁNKOVÁ

E-mail: jana.silhankova@lf1.cuni.cz

phone: +420 224 964 378



2nd, 3rd and 4th year, U.S. Federal Loans

MARIKA ŠPÁCOVÁ

E-mail: marika.spacova@lf1.cuni.cz

phone: +420 224 964 242



5th and 6th year, ECFMG, graduates

JITKA WURMOVÁ

E-mail: jitka.wurmova@lf1.cuni.cz

phone: +420 224 964 242



Tuition fee payments

MARKÉTA KARAŠOVÁ

E-mail: marketa.karasova@lf1.cuni.cz

phone: +420 224 964 206

STUDIES AND REGULATIONS

Charles University consists of seventeen independent and self-governing faculties in Prague, Pilsen, and Hradec Králové. The faculties educate around 50,000 students including over 10,000 international students.

The First Faculty of Medicine is part of the University since its establishment. Nowadays, we educate more than 4,000 undergraduate students and are the largest medical faculty in the Czech Republic. Among those students, **we also welcome around 800 international students** studying programmes in English. The Faculty's buildings are located in the historical centre of Prague. **Theoretical institutes** of the First Faculty of Medicine have been undergoing a thorough renovation to ensure that their historical nature goes hand in hand with modern functionality. **Clinical education** takes place mainly in the General University Hospital, but some subjects are taught in other hospitals in Prague. You may find the map of the departments at the end of this guide. The General Medicine programme lasts 6 years, Dentistry lasts 5 years, the Faculty also offers various other study programmes related to medicine and health sciences (mainly in Czech language).

At enrolment, **you will be assigned to one of the study groups**. You will get to know your classmates during Fresher's week organised by the Faculty and a student organisation MEDSOC. Each study group has a different timetable and its own guides, who are students from the 2nd year and above that have volunteered to help new students adjust to life and studies at the First Faculty of Medicine. They will meet with their study group regularly and answer all of your questions. You are also welcome to contact the International Office or Vice-Dean for International Studies for serious matters.

Before classes start, you will have to get a Student Card and obtain a username and password to access the Student Information System (SIS). During your first year, you will also have to pass a medical check-up.

The first three years of the study at the First Faculty are mostly theoretical with a lot of spend time in the lecture halls and laboratories.

The studies consist of:

- lectures (same schedule for all students in your year) and
- practical lessons (seminars, microscopy lessons, and laboratory work)
- clinical subjects (from the fourth year, mainly spending time in a hospital and having some lectures)

The first three years include winter and summer exam periods. For every completed course you receive a certain number of credits. **Always check the course requirements** (including the attendance) at the beginning of the semester, so you know what to expect during the year.

The course can be completed by a credit, classified credit, or a final exam. You usually need to obtain a credit to be eligible for the final examination. There are a number of places to take each exam. However, **it is your responsibility to plan the exams accordingly and register for them in the Student Information System. Each student has three attempts to pass each exam.** The exam period is usually 4 weeks long. Many of the final exams are oral, but occasionally there is a written test before the oral exam.

Clinical teaching (years 4–6) is organized into internships, which means that you will spend a certain number of weeks in one clinical department (for example orthopedics, gynecology, or ophthalmology). After you obtain your credit, you will have the rest of the year to pass the exams. The earlier you pass them, the better. The Dentistry programme already starts the clinical aspects of the programme in the second year together with further theoretical education.

The studies are completed by passing all state examinations and all your family and friends are welcome to congratulate you during the graduation ceremony at the historical Carolinum.

ACADEMIC CALENDAR

ACADEMIC YEAR 2023/2024

- 01. 10. 2023
Official start of the academic year 2023/2024
- 02. 10. 2023
Education starts for winter semester
- 02. 10. 2023 – 22. 12. 2023
Winter semester (12 weeks)
- 26. 10. 2023
Matriculation ceremony (no classes)
- 23. 12. 2023 – 01. 01. 2024
Christmas break
- 02. 01. 2024 – 21. 01. 2024
Continuation of winter semester (3 weeks)
- 22. 01. 2024 – 18. 02. 2024
Examination period (4 weeks)
- 19. 02. 2024 – 02. 06. 2024
Summer semester (15 weeks)
- 28. 03. 2024
Dean's Day (no classes)
- 14. 05. 2024
Rector's Day (no classes)
- 03. 06. 2024 – 30. 06. 2024
Examination period (4 weeks)
- 01. 07. 2024 – 31. 08. 2024
Summer vacation
- 02. 09. 2024 – 13. 09. 2024
Extended examination period, exams corrections (no more exams after 13. 9.)
- 30. 09. 2024
Official end of the academic year 2023/2024

ENROLLMENT OF SUBJECTS:

Winter semester:

from 19. 7. – 18. 09. 2023 eligible subjects for students with completed study responsibilities (priority enrollment)

from 19. 9. – 01. 10. 2023 compulsory and compulsory optional subjects according to the study plan for the whole academic year

from 19. 9. – 06. 10. 2023 eligible subjects for the winter semester for all students

Summer semester:

from 05. 02. 2024 at 09.00 a.m. till 26. 02. 2024 23.59 registration of eligible subjects for summer semester (students from other faculties from 12. 02. 2024 9 a.m. till 18. 02. 2024)

STUDENT INFORMATION SYSTEM (SIS)

SIS is your electronic credit book.

You will be using the SIS system on a regular basis to check your study requirements and credits. It will calculate the number of received credits as well as the number of credits you need to obtain at the end of the academic year.

SIS is also used to sign up for exams and enrolment into compulsory and elective subjects.

To sign up into SIS, visit the [website](#).

With your student ID card, you will also obtain a login and password to create your personal profile in the SIS (your login is 8 digit number on your student card).

Don't forget! If provided information changes during your studies, you need to update your SIS profile or inform the International Office if you are unable to proceed with changes yourself. Your account will have an inbox that you should check regularly for messages from the faculty.



COMPULSORY AND ELECTIVE SUBJECTS

Your study plan is determined by the faculty, and your timetable depends on your study group, but all groups have to pass the same number of the subjects and hours.

In your timetable (available in the SIS) you will find all assigned compulsory subjects. You need to pass all subjects in your study plan for each given year. After completing the course, the result will be published in the SIS and you receive a certain number of credits.

Additionally, you also need to enrol for some elective subject to have enough credits to complete the year and your studies.

You have a variety of subjects to choose from. It is necessary to gain at least 3 credits from eligible subjects per academic year, maximum is 9 credits. Credits above the maximum do not count.

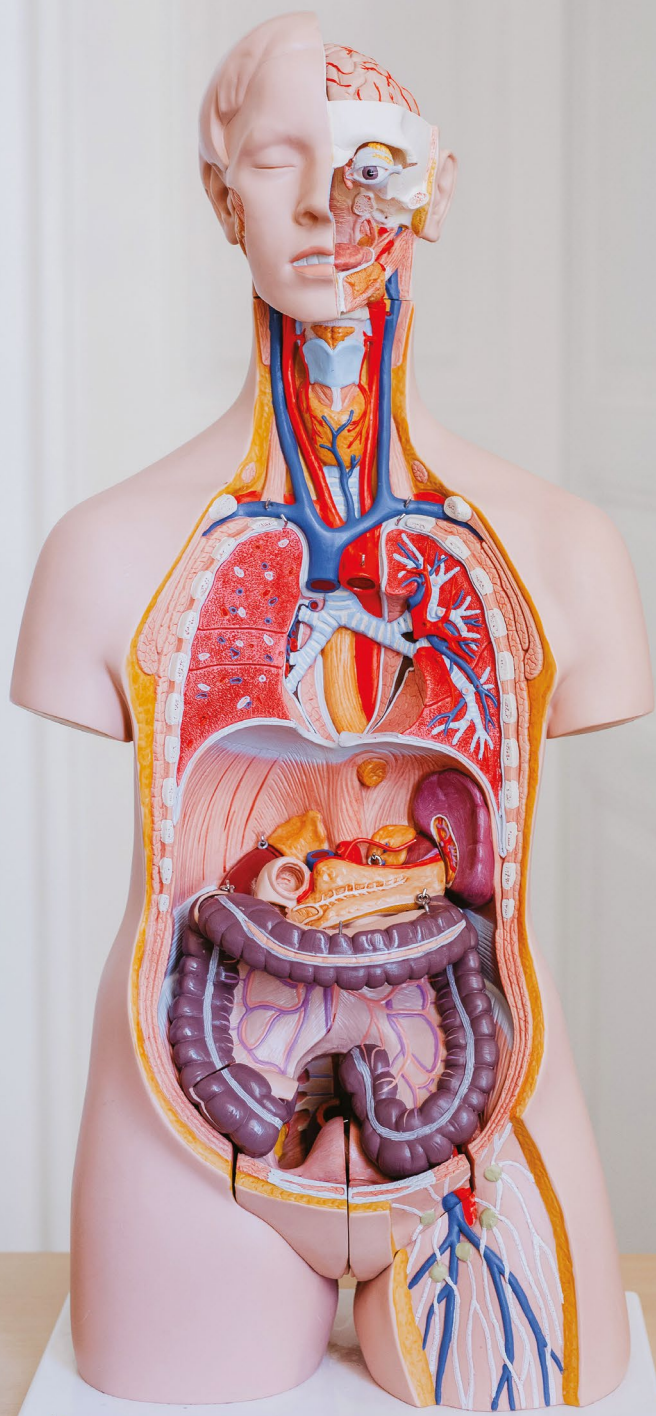
Find detailed information about the elective subjects on the website.

There is a detailed description of electives on the [website](#).

The faculty offer various subjects in English and the offer changes every year.

The complete list of the courses is also available on the website and as student of Charles University you may sign up for courses at other faculties, too (depending on the faculty's criteria and number of places).

Please check the offer of courses every year, it is your responsibility to choose the elective courses, check the compulsory courses and make sure that you fulfilled all requirements to continue in your studies.



CREDITS AND EXAMS

CREDITS

Obtaining a credit is one of the possible ways of completing a subject or clerkship. It is usually compulsory to obtain the credit in order to be allowed to take the exam, if an exam is required.

You will obtain a credit for a subject after completing a certain number of school hours or seminars, practical lessons, writing an essay or passing a test, depending on the course requirements.

EXAMS

Exams are mostly oral, and sometimes are preceded by a written test.

There is a list of exam questions on the official website of the institute or department which teaches the subject, as well as on SIS, under subject information.

You sign up for the exam using SIS. There is enough terms for all students taking a subject to register for the exam.

Registration for exam terms will open at a given time, and remain open for a given amount of time, which is posted on SIS next to the exam terms. Some exam terms are very sought after and will be booked only seconds after registration opens, so **be aware and plan accordingly**.

Exams are evaluated with the marking system – excellent (1), very good (2), good (3). If you fail, you will have to repeat the exam and the professor will simply write the date without a grade.

You will have up to three attempts for each exam, however, **if you do not plan your examination period carefully, you may run out of time to use all three of your attempts for each exam**. It is up to you to plan to take your exams in time, so that you have enough time to use all three of your attempts if necessary. Various institutes may also have their own special rules for exams terms (such as September terms are only for repeated attempts).

If you do not pass an exam after the first three attempts, **you will have to repeat the subject**. In order to repeat a subject you also need to have enough credits to pass the year without that subject (more information in the Individual Study Plan section). Each subject can be repeated just once. You will have three new attempts for passing the exam if you repeat a subject.

If you sign up for an exam term, but you do not take the exam, you must apologize. If you won't apologize, you lose the attempt for the exam.

Plan your exam terms carefully! There will be no additional terms besides the ones posted on SIS.

If you already studied at the university and you want to request a recognition of some classes, please follow the faculty's regulations or do not hesitate to reach the International Office for [help](#).



CREDIT SYSTEM AND INDIVIDUAL STUDY PLAN (ISP)

Credit points are points which you will earn by fulfilling the individual courses. You will find an overview in the SIS. Check your credits regularly as there is normal number of credits (see the table below) that you should receive every year to complete your studies smoothly.

If you don't pass some of the main subjects of the particular year and you have minimum number of credits (for example in the first year 50 effective credits, i.e. number of credits from eligible subjects is not higher than 9), you can ask for retake of subjects within the Individual Study Plan if necessary. Please always consult your situation in advance with the International Office.

In order to complete your studies, General Medicine students need 360 credit points; Dentistry students need 300 credits.

	Normal number of credits	Minimum number of credits
Year 1	60	50
Year 2	120	110
Year 3	180	170
Year 4	240	230
Year 5	300	300
Year 6	360	360 without exception

INDIVIDUAL STUDY PLAN

Individual Study Plan is a measure to help you to complete your studies if you failed during the exams. To apply for the Individual Study Plan, you need the minimum number of credits for the given year (e.g. min 50 credits in the first year). Find the application on the website or visit the International Office to get a guidance.

You can repeat compulsory subjects only once during your studies and it must be done immediately in the next year.

At the end of ISP you need to have normal number of credit points and fulfill all subjects registered in ISP. By repeating the subject, you get three new attempts for examination. Get in touch with you teacher if you repeating the subject to agree on more details.

If you do not fulfil all conditions of the individual study plan, your studies will be terminated.

You may also apply for ISP in case of parenthood, Erasmus stay abroad or representation of the Czech Republic in sports.

All applications are assessed by the Dean or a designated Vice Dean.

Application can be found on the faculty [website](#).



EVALUATION OF TEACHING

On SIS you will find a section where you can evaluate the quality of education at your faculty. You can evaluate individual subjects after you complete them.

Evaluations consist of questionnaires which include several questions about your satisfaction with the content of the seminars and lectures, questions about the attitude of the teachers. The second part allows you to write comments about the subject in your own words.

You can also evaluate individual teachers. Teachers who receive poor evaluations are required to meet with the dean and students to discuss what lead to their poor performance and how they can improve their teaching. The best teachers receive a financial reward.

Evaluation is anonymous, although you will have to log into SIS to access the evaluation questionnaires. Teachers will be able to read comments written about them, but they will not know who the authors are. You may choose to sign your comments if you wish.

It is important to evaluate carefully. If your comments are meaningful and clear, teaching will improve. Evaluations are becoming more and more popular in recent years. All members of academic community appreciate a good feedback to improve their educational methods.

COUNSELLING AND MEDIATOR

Everybody sometimes needs a helping hand or someone to talk. The faculty also offers counselling to all its students and you may also use other services offered for CU students free of charge.

If you need any assistance, please do not hesitate to reach the International Office or have a look at the support offered by the faculty and the university.

Find contact information [here](#).

The faculty also established a position of a mediator who is here to help in creating a safe, respectful and fair environment. Dr. Arientová ensures that the ethics of the faculty are upheld and that a fair education environment is available for everyone.



You may use the contact mediatorka@lf1.cuni.cz. You will get a response from MUDr. Simona Arientová, Ph.D., MBA., she works at the Department of Infectious Diseases, First Faculty of Medicine.

Find more information [here](#).

STUDENT CARD AND ISIC LICENCE

After enrolment, you will be requested to get a university student card. The card is free of charge. You may also purchase a combined card with an ISIC licence to get even more students discounts around the globe.

To get your student card (with the ISIC licence or not), you will need to visit the card service centre and bring your ID or passport (a study confirmation is also recommended, but they should be able to identify you after the enrollment). They will take your photo and issue the card immediately.

There are several offices that issue Student ID cards:

Faculty of Mathematics and Physics

Ke Karlovu 3, Prague 2

UK Point

Celetná 13, Prague 1

Faculty of Law

Nám. Curieových 7, Prague 1

Always check up-to-date opening hours of the centres on the [website](#). You will need the student card to enter buildings, use a library or you may even pay for your meals in the canteens or use the printers.

MATRICULATION CEREMONY

The matriculation ceremony is a celebratory event during which you will be officially welcomed at the faculty and the university.

The event is formal and compulsory for all new students, do not forget to dress accordingly. It takes place in the main building of Charles University, the Carolinum. The Address is Ovocný trh 3/5 and the event is only intended for the students (not their families and friends).

The ceremony is completed by listening the matriculation oath read loud by the promotor and your confirmation to follow and respect student duties by symbolically touching the scepter with your hand.

You will receive detailed instruction by the International Office and if you are unable to participate you will be requested to sign matriculation oath.



COMPULSORY MEDICAL CHECK FOR 1ST YEAR STUDENTS

As students will be working with patients during their studies, all 1st-year students must undergo a compulsory medical check-up to evaluate their health status. You need provide a proof of vaccination of Hepatitis B and further tests and your medical history (find more below)

Vaccination – Hepatitis B

Vaccination starts at the Hygiene and Epidemiology Institute, where they will test the level of antibodies:

Student has enough antibodies – Hygiene Institute will fill in and stamp the form

Student needs vaccination – Hygiene Institute will schedule vaccination (based on availability) or recommend where to go for vaccination.

Vaccination form must always be signed and stamped by the Hygiene and Epidemiology Institute.

Address: Studničkova 7, Praha 2

Medical Check-up

Students can undergo the check-up in their own country, however, the form must be signed and stamped by a Czech physician. The medical history form is for your general practitioner and should stay with them.

Required tests are: Medical history / Physical examination / Urine test, AST / HIV / ALT / BWR / Full blood count – all tests not older than 3 months.

Chest X-ray (not older than 2 years), HbsAG (not older than 1 year), Anti HBs.

Both medical check-up and vaccination must be done and submitted to the International Office by 30th March. of the academic year (when you start the first year).

Forms can be found on our [website](#).

Suggested GPs:

Dr. Ivana Grohová, MD
www.doctor-prague.com

E-mail: doctor.groh@seznam.cz
Mobile: +420 776 707 887

Ordinace PL Karlín, s.r.o.
www.ordinace-karlin.cz

E-mail: info@ordinace-karlin.cz
Phone: + 420 224 818 214

MUDr. Youngova a spol., s.r.o.
www.young.co.cz

E-mail: ordinace@young.co.cz
Phone: + 420 222 366 166



DORMITORIES AND CANTEENS

DORMITORIES

Staying in university dormitories is highly recommended. If you would like to book a room in a dormitory, please contact the International Office.

Some of the preferred dorms are Jižní Město, 17. listopadu and Kajetánka. Accommodation is also possible in other University dorms.

The price of the accommodation varies depending on the choice of dorm, room size, and length of stay. You may always find detailed prices on the website of the dormitories.

Click [here](#) or contact the dormitories at accommodation@kam.cuni.cz.

Each dormitory also has a housing assistant - a local student to assist international students with their orientation and housing in the dorms. Find more [here](#).

CANTEENS

As a student of Charles University, you may also enjoy a variety of our canteens where you dine and enjoy some time with your classmates.

You may often choose from four main courses (including vegetarian or vegan options) for an affordable price. The payment is easy via your student card, but do not forget to charge it during your first visit (usually at the cash desk). For some canteens, you may also need to reserve your meals in advance.

Find the list of the canteens and opening hours [here](#).

Our student guides will also recommend you many other places where to get something quick to eat or relax with a cup of coffee and tea.

The recommended places are marked on the map at the end of this Guide.

TEXTBOOK, LIBRARY, RESOURCES AND THE INSTITUTE OF SCIENTIFIC INFORMATION

Official recommended literature is listed on the webpages of the individual institutes or in the Student Information System.

We always suggest to seek recommendation from your teachers or ask your student guides and older students to give their own recommendations. You may borrow most of the books in the libraries or even use many online resources. MEDSOC also organises a sale of the books at the beginning of each year.

If you are looking for a place to study, the university offers a number of libraries all around Prague. The Faculty library closest to your lecture halls and seminars is the building located at U Nemocnice 4. You can borrow books or use the study rooms in the first-floor (please use a cloakroom to safely store your belongings). After the enrollment, do not forget to sign-up. You can do it online and the access is valid to all university libraries. To use the library services you will always need your student card.

To make sure that you do not meet with closed doors, always check the opening hours on the website. Remember that the services are more limited over summer holidays. You may also use computers in the faculty network to connect to electronic sources and find other multifunctional devices for printing and copying in the study rooms and the library.

Find all the information [here](#) or use the online registration on this [website](#). For the book reservation and online sources, you may also use the portal UKAŽ which is available [here](#).

Please have in mind to follow the library regulations. If you return a book past the due date, you will be asked to pay a fine.

Throughout your studies, you will also find other comfortable places where to study and get some rest between your classes and practicals. Do not forget to share them with us on social media!

SPORTS

You will have compulsory physical education (PE) during your first two years. Physical education usually takes place in the SCUK building in Hostivař on Bruslařská 10.

If you are an athlete and you have regular training on the state or international level, you can be excused from the physical exercise requirement after submitting documentation of your activities.

If you are not capable of attending PE due to health reasons, you will have to bring confirmation from your physician at the beginning of the semester. Several theoretical lessons will follow, combined with rehabilitation.

You can also take PE as an eligible subject later on in higher years of studies. The faculty has several sports departments where you can participate in beach volleyball, floorball, golf, climbing, swimming or volleyball and more.

The institutes organize several sport courses and trips, which you can sign up for on SIS, or in person. These include summer and winter sports courses, massage training (as an optional subject), and a summer trip to Italy.

The summer sports courses are held in the village of Dobronice. The winter courses are held in the Krkonoše mountains. You can also travel abroad (Austria, France and Italy) during the summer courses.

INTERNET CONNECTION AND SOCIAL MEDIA

You may always connect to EDUROAM network in all faculty facilities and buildings. To set a password, you need to log in to CAS.

The wifi network EDUROAM also works at other universities and higher-education institutions in Czechia and around the globe.

Several computer rooms are also available around the campus and you can freely access them.

During your studies, you will also use various platforms such as Moodle or MS Teams. As a student of Charles University you get an access to Microsoft Office licence and you will also have a chance to access Amboss and other platforms to improve your studies and career possibilities.

All official information and regulations are always published on the website of the faculty en.lf1.cuni.cz. Please check it regularly if you look for answers to your questions.

Also, do not forget about our social media.

@lf1uk on Facebook

@1lf_charlesuni on Instagram

@LF1UK on Youtube

#lf1cu#firstfacultyofmedicine



STUDENT LIFE

Studying in different country is also about enjoying a student life. Prague offers many options on how to enjoy your free time, get to know everyone and you should not forget to discover other parts of our beautiful country - Czechia.

If you are looking for some events organised by the faculty, you should not miss the Faculty's ball in January, a picnic in our gardens or Rector's Sports Day in May. In October you may look forward to the event "Jednička na startu" that welcomes the new academic year and all new students. Further events are also organised by the students associations and the university.

We cannot forget the Academic Club in Faust House (Karlovo náměstí 40), entered from the right corner of the courtyard. A variety of concerts, exhibits, and discussions are organized here during the year. The most well-known is the Faust Chair, which is held once a month and invites interesting personalities of the faculty for a captivating discussions. You can find the programme of the [Academic Club](#).

You are also welcome to visit the club during the opening hours or book the premises for a student event.



MEDSOCIETY

MEDSOCIETY is a society of international students at the First Faculty of Medicine. Their office is located on the second floor of the Faust House.

Their mission is to help international students to adjust to the life at the First Faculty, and help them thrive by choosing the right study resources and strategies, organizing social events and extracurricular activities, and serving as a support network.

They organise very popular seminars about jobs abroad and how to prepare for foreign licensing exams and also some parties like the Halloween costume party, an international food fair, a Christmas Party, and a variety of others.

MEDSOC organizes competitive football and basketball teams that have several exciting games each year; students can also join any of the MEDSOC club sports, depending on their interests.

In addition to providing opportunities for students to relax and interact, MEDSOC also provides a Guide System for first year students: each first year study group is assigned several experienced students, usually from second and third year, who provide advice and help to the incoming students during their first year at the faculty.

MEDSOC is a non-profit, volunteer-based organization. There is no membership. All students are welcome to attend MEDSOC events and get involved in the organization. Elections for board positions take place at the end of the summer semester. Applications for non-board positions open shortly after the elections.

Find out more on: www.if1medsoc.org

Charles University



SMČ



IFMSA



SSSČR



MEDSOC organizes a number of social, educational and sports events throughout the year:

- » **Second-Hand Book Sale** – in the second week of the winter semester
A great possibility to buy or sell textbooks and other study materials.
- » **Freshers' Week** – in the week after Enrolment day
The aim of this event is to welcome all freshmen. The event culminates in an interfaculty Welcome Bash at Lavka on the riverfront.

The Spring Ball – in the beginning of the spring

It is a formal event taking place each spring, where students and professors can mingle and celebrate the year's successes.

OTHER EVENTS

The Medical Ball – January

A traditional ball that has been around for more than one hundred years, which is held in the Žofín palace.

The Faust Chair – once a month in the Academic Club

They are discussions with important and interesting members of the faculty and public personalities. Discussions are in Czech, but all students are welcome.

A Drop of Blood – November, March/April

The charity blood drive in cooperation with the Transfusion Department of General University Hospital (VFN).

1+6 Medic Party – December

A non-traditional welcome and farewell party with participation of the Dean. During this event first and sixth year students meet but all students are welcome to attend.

The Medical Picnic – May

A relaxed afternoon event in the garden of the Psychiatry and Neurology Departments of the First Faculty of Medicine and VFN with plenty of music, lemonade, tasty food, and friends.

The Saint Nicholas donation at the beginning of December

This charity event involves donating sweets and toys to children in hospitals around Prague.

Star Party – October, April

A legendary and stylish medical party at the famous dorm Hvězda (The Star).

Erasmus welcome party – October/November, February/March

The goal of the party is to welcome and to acquaint incoming Erasmus students with local Czech students.

The Rector's Sports Day – May

A great opportunity to meet other students from other faculties of Charles University.

MediCafé – once a month

MediCafé (also known as a medical-scientific coffee bar) is an events where laymen, medical students, and anyone interested in medicine can chat with a physician who endeavours to popularize the biomedical sciences. Meetings are held in a comfortable coffee bar called Krásný Ztráty.

A FEW PRACTICAL TIPS AT THE END

Before the start of classes, do not forget to get a labcoat. It is recommended to buy at least two because you will need one for dissections and one for other seminars. You can buy coat [here](#).

You also need a pair of indoor shoes for lessons in laboratories. Also you should buy dissection tools – one pair of anatomical forceps and a scalpel with changeable razors. However, do not worry, the student guide will tell what to get and what they recommend.

You should wear your ISIC card with your white coat so that teachers and other hospital employees know that you are a student.

You should definitely buy a short-term or a long-term public transportation ticket if you use public transportation. Believe us, you do not want to get a fine. You can buy it near the Dean's building or in many metro stations or even online or using a app on your phone. It is simple and the public transportation in Prague is really affordable and easy to use.

If you require a visa to study in the Czechia. Check the requirements for extending the visa in advance.

If you have any questions related to studies or life in Czechia do not hesitate to contact the International Office and always please try to solve any obstacles as soon as possible.

We wish you the best of luck with your studies and welcome to the First Faculty of Medicine, Charles University.

E-shop 1. LF UK

Check the offer of our e-shop and buy a merchandise with the faculty's logo.

Look at our website alumni1lf.cz/en/e-shop or simply scan the QR code:



ALBERTOV



Ke Karlovu

Fyzikální ústav UK

Albertov

Matematicko-fyzikální fakulta UK

Teletextová služba

Muzeum Policie České republiky

Kostel Nanebevzetí Panny Marie a sv. Karla Velikého

Horská

Ztracenka

Generální zeleň

Studničkova

Studničkova

Studničkova

Albertov

Votočková

Hlavova

Horská

Korčáková

Horská

Albertov

Hlavova

Na Slupi

Vnišlavova

Vnišlavova

Na Slupi

Sekaninova



Na Slupi



Botičská



Svoboda



Vnišlavova

Vnišlavova



1 Purkinje Institute (Institute of Histology and Embryology; Institute of Pharmacology; Institute of Biology and Medical Genetics)

2 Institute of Physiology

3 Classrooms of the Institute of Nursing Theory and Practice

4 Institute of Pathology

5 Institute of Immunology and Microbiology

6 Institute of Immunology and Microbiology

7 Institute of Hygiene and Epidemiology

8 Institute of Forensic Medicine and Toxicology

9 Rheumatology Institute

10 Institute of Nursing Theory and Practice

11 Department of Rehabilitation Medicine

B Direction to the metro station Karlovo náměstí

C1 Direction to the metro station I. P. Pavlova

C2 Direction to the metro station Vyšehrad

Restaurant, café, canteen

Canteen Albertov

Tram stop Albertov (14, 18, 24, 93, 95)

Tram stop Albertov (1, 2, 3, 5, 7, 12, 14, 17, 18, 21, 24, 25, 93, 95, XC)

Tram stop Na Slupi (1, 2, 3, 5, 7, 12, 14, 17, 18, 21, 24, 25, 93, 95, XC)

Folimanka playground

Fitness workout park Folimanka

Stairs



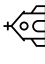

Tennis courts

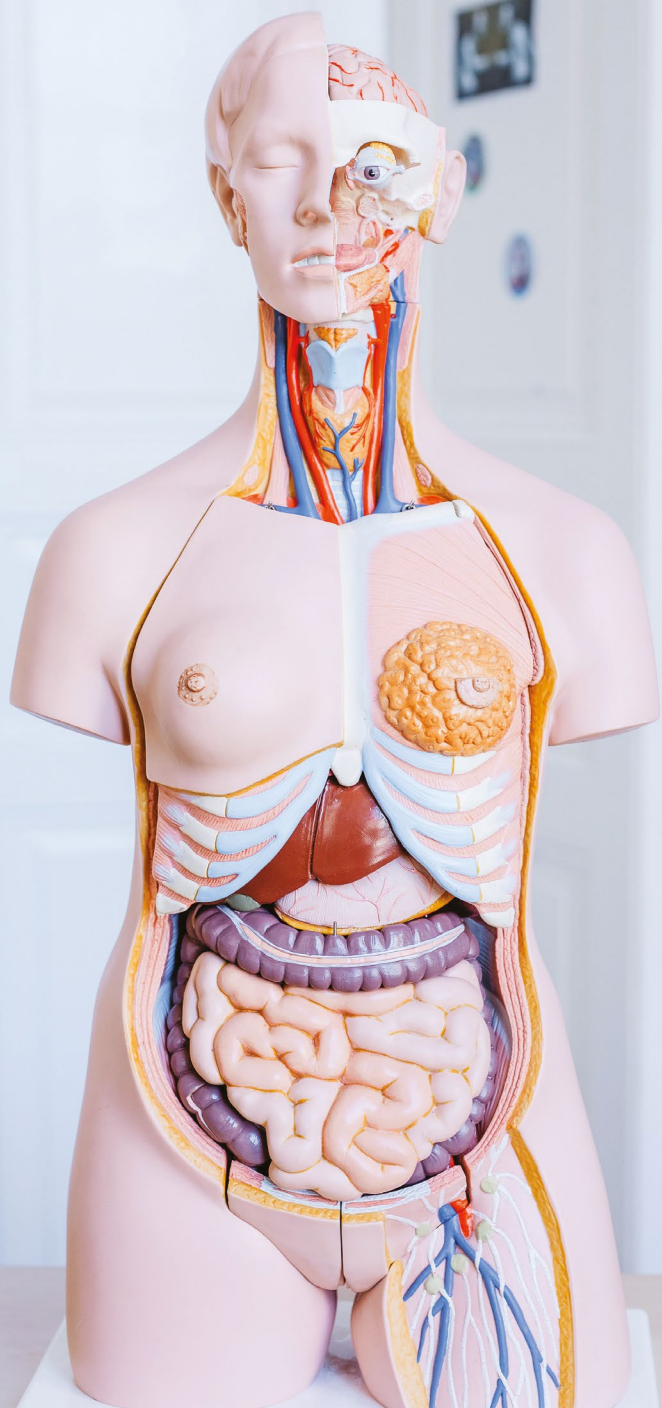
Genetic Garden, Faculty of Science CU

Church

Park



1	3 rd Department of Medicine	13	Dean's Building - 1. LF UK		Direction to the metro station Karlovo náměstí
2	Institute of Anatomy	14	Institute of Sexuology	1	Na Bojišti (148)
3	Institute of Sports Medicine	15	Department of Neurology	2	Apolinářská (148)
4	Institute of Biochemistry and Experimental Oncology	16	Department of Psychiatry	3	Kateřinská (148)
5	Institute of Scientific Information (library, study rooms, computer room)	17	Institute of Pathological Physiology	4	Větrov (148)
6	General University Hospital in Prague	18	Institute of Biophysics and Informatics	5	Botanická zahrada (14, 18, 24, 93, 95)
7	Faust House (Institute for Medical Humanities; Institute for History of Medicine and Foreign Languages; Institute of Public Health and Medical Law; MEDSOC; SMČ; IFMSA; Academic Club)	19	Institute of Nuclear Medicine	6	U Nemocnice (148)
8	1 st Department of Surgery	20	Institute for History of Medicine and Foreign Languages	7	Větrov (148)
9	4 th Department of Medicine	21	Department of Dental Medicine	8	Na Moráni (2, 3, 4, 10, 14, 16, 18, 21, 24, 92, 93, 94, 95)
10	Department of Otorhinolaryngology	22	Institute of Hematology and Blood Transfusion		Botanical Garden, Faculty of Science CU
11	Institute of Medical Biochemistry and Laboratory Diagnostics	B	Institute of Physical Education		Church
12	Movement Disorders Centre	C	Metro station Karlovo náměstí		Park
			Direction to the metro station I. P. Pavlova		





en.lf1.cuni.cz

oldest tradition with youthful spirit